



# Gas safety



A gas hob

## What can I do to help?

You must allow Golden Lane Housing access to your home to complete your annual gas safety check. If you do not allow us access you will be in breach of your tenancy agreement and we can take legal action.

If you employ anyone to carry out gas work in your home, you must make sure they are a Gas Safe Registered engineer.

**You must never attempt to do any gas related work or repairs yourself. Not only could you be breaking the law, but any work you carry out could be life threatening for you and your neighbours.**

## If you suspect a gas leak or can smell gas:

### do...

Extinguish all forms of naked flames.

Open all windows and doors.

Turn off the gas supply to the property, immediately, which will be found by your meter.

**Phone the Gas Emergency Service on 0800 111 999 and then Golden Lane Housing. The gas supply must remain isolated until the leak has been rectified.**

### do not...

Switch on any electrical appliances, including light switches.

Use a mobile phone in the area.

Use matches for light.

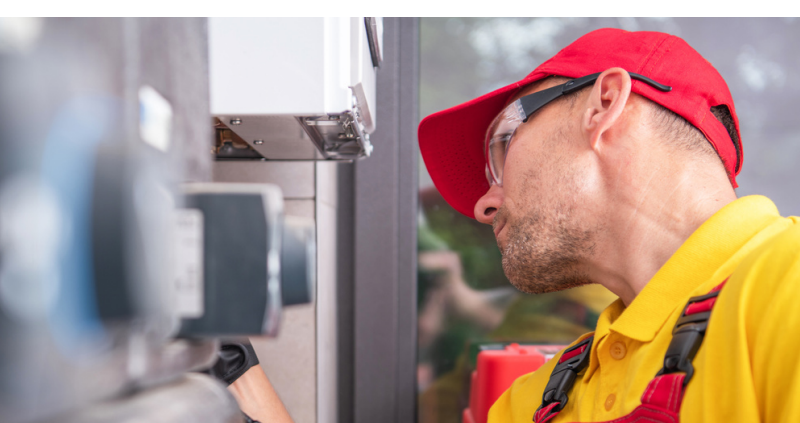


A gas boiler

## What if an appliance fails the safety check?

The Gas Safety Record will contain details of any problems found at the time of the inspection, and any action that has been taken.

If an appliance fails the safety check, it may be necessary to disconnect it. Our engineer will make the appliance safe whilst on site in this circumstance. Golden Lane Housing will then contact you to discuss and agree any further actions and when we will do them.



## Chimneys

Solid fuel systems with either a chimney or flue will be swept annually. Any chimney that has been decommissioned must not be brought back into use.



# Gas safety



Gas safety check

## Gas safety tips

Make sure you know where your gas meter is located and how to turn off the gas supply in the event of an emergency.

### NEVER...

- cover an appliance such as a boiler or gas fire or block the air vents
- block or obstruct any fixed ventilation grilles or airbricks
- block or cover outside flues
- fit draught exclusion strips to doors of a room that contains a gas appliance
- use a gas appliance if you think it's not working properly

**Golden Lane Housing is required by law to ensure gas appliances have an annual safety inspection. To help us meet this legal requirement, and for your safety, you must allow our engineers into your property to carry out our checks.**

**The engineer will test all gas appliances, pipe work, flues and smoke alarms in your home.**

**We will notify you, at least one month before your gas safety check needs to be done and arrange an appointment with you.**